

# How to LOTUS

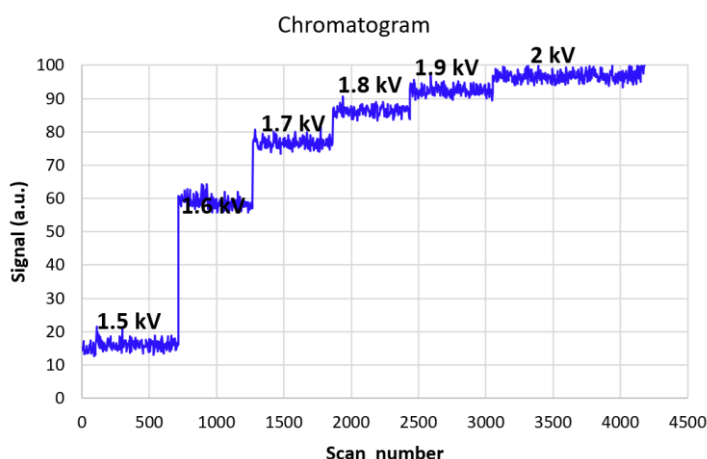
More Peptide & Protein IDs, more consistently



## Take care of your emitter, and it will take care of your electrospray!

The LOTUS emitters produce smaller meniscus because of their hydrophobic surface. This produces less evaporation, lower voltages, better ionization, and a more consistent spray.

The optimum conditions for them will be slightly different from the Classic emitters. When transitioning to the LOTUS emitters, you will need to find that sweet spot that provides the best performance.



The optimum voltage required by the LOTUS emitters will be slightly lower than the classic. To adjust the voltage, start with a rather low voltage (i.e. 1.5kV) and rise it by 0.1kV increments, until you get a nice and stable signal, and signal increases are not significant.

Starting with a lower voltage will allow you to avoid exposing the coating to overly intense electric fields and microscopic electric discharges, which could erode the coating over time.

Take care of your emitter, and it will take care of your electrospray!

